

Oracle® Banking Platform Collections

Customization Guide

Release 2.6.2.0.0

E95189-01

May 2018

Oracle Banking Platform Collections Customization Guide, Release 2.6.2.0.0

E95189-01

Copyright © 2011, 2018, Oracle and/or its affiliates. All rights reserved.

This software and related documentation are provided under a license agreement containing restrictions on use and disclosure and are protected by intellectual property laws. Except as expressly permitted in your license agreement or allowed by law, you may not use, copy, reproduce, translate, broadcast, modify, license, transmit, distribute, exhibit, perform, publish or display any part, in any form, or by any means. Reverse engineering, disassembly, or decompilation of this software, unless required by law for interoperability, is prohibited.

The information contained herein is subject to change without notice and is not warranted to be error-free. If you find any errors, please report them to us in writing.

U.S. GOVERNMENT END USERS: Oracle programs, including any operating system, integrated software, any programs installed on the hardware, and/or documentation, delivered to U.S. Government end users are "commercial computer software" pursuant to the applicable Federal Acquisition Regulation and agency-specific supplemental regulations. As such, use, duplication, disclosure, modification, and adaptation of the programs, including any operating system, integrated software, any programs installed on the hardware, and/or documentation, shall be subject to license terms and license restrictions applicable to the programs. No other rights are granted to the U.S. Government.

This software or hardware is developed for general use in a variety of information management applications. It is not developed or intended for use in any inherently dangerous applications, including applications that may create a risk of personal injury. If you use this software or hardware in dangerous applications, then you shall be responsible to take all appropriate failsafe, backup, redundancy, and other measures to ensure its safe use. Oracle Corporation and its affiliates disclaim any liability for any damages caused by use of this software or hardware in dangerous applications.

Oracle and Java are registered trademarks of Oracle and/or its affiliates. Other names may be trademarks of their respective owners.

This software or hardware and documentation may provide access to or information on content, products and services from third parties. Oracle Corporation and its affiliates are not responsible for and expressly disclaim all warranties of any kind with respect to third-party content, products, and services. Oracle Corporation and its affiliates will not be responsible for any loss, costs, or damages incurred due to your access to or use of third-party content, products, or services.

Contents

Preface	6
Audience	6
Documentation Accessibility	6
Organization of the Guide	6
Conventions	6
1 About this Guide	8
2 Customizing Collections	10
2.1 Prerequisites	10
2.2 Customizing Collections	10
2.3 Using the Collection Installer	11
2.4 Downloading and Configuring Software and Jar Files	15
2.4.1 Downloading Eclipse	15
2.4.2 Downloading Required Jars	16
2.4.3 Configuring eclipse Project	16
2.4.4 Creating Linked Resource	21
2.4.5 Creating weblogic domain	26
2.4.6 Updating deploy.xml	28
2.4.7 Setting Variable in cmDeploy	29
2.4.8 Creating and Deploying cm.jar	31
2.4.9 Deploying SPLService, CollectionWeb and ohelp	31
2.4.10 Importing Test Project into Customization Setup	37
2.4.11 Troubleshooting JUnit	41

List of Figures

Figure 2–1 Copy SDKCommon and R_2.6.0031	10
Figure 2–2 Hibernate folder	11
Figure 2–3 TEMPDIR Content	12
Figure 2–4 Config.properties	12
Figure 2–5 Collection Installer: Initial Details	13
Figure 2–6 Collection Installer:Weblogic Server Details	13
Figure 2–7 Collection Installer: Confirm Installation Details	14
Figure 2–8 Collection Installer: Installation Complete	15
Figure 2–9 Copy Eclipse 4.4	16
Figure 2–10 Create Workspace Folder	16
Figure 2–11 Double-click Eclipse.exe	17
Figure 2–12 Workspace Launcher	17
Figure 2–13 Project Explorer - Import	18
Figure 2–14 Select Existing Projects into Workspace	19
Figure 2–15 Browse and Locate eclipseProject	20
Figure 2–16 Import Projects - Finish	21
Figure 2–17 Linked Resources	22
Figure 2–18 New Variable asBase	23
Figure 2–19 Select Folder	24
Figure 2–20 New Variable Name and Location	25
Figure 2–21 Linked Resources - Path Variables	26
Figure 2–22 Edit setDomainEnv.cmd	27
Figure 2–23 Edit setDomainEnv.cmd	27
Figure 2–24 JTA Timeout	28

Figure 2–25 deploy.xml	29
Figure 2–26 Open External Tools Dialog	29
Figure 2–27 External Tools - asBase	30
Figure 2–28 asBase - Edit User Property	30
Figure 2–29 Artifact Generator	31
Figure 2–30 cmDeploy	31
Figure 2–31 Deploy SPLService.ear	32
Figure 2–32 Deploy CollectionWeb	33
Figure 2–33 Deploy ohelp.ear	34
Figure 2–34 Creating new Group	35
Figure 2–35 Creating new User	36
Figure 2–36 Setting for new User	37
Figure 2–37 Import	38
Figure 2–38 Select Existing Projects Into Workspace	39
Figure 2–39 Select eclipseTestProject	40
Figure 2–40 Import Projects	41
Figure 2–41 VM Arguments	42

Preface

This document describes the various software and configuration options required to customize the Oracle Banking Collections.

This preface contains the following topics:

- Audience
- Documentation Accessibility
- Organization of the Guide
- Conventions

Audience

This document is intended for the users customizing Oracle Banking Collections.

Documentation Accessibility

For information about Oracle's commitment to accessibility, visit the Oracle Accessibility Program website at <http://www.oracle.com/us/corporate/accessibility/index.html>.

Access to Oracle Support

Oracle customers have access to electronic support through My Oracle Support. For information, visit <http://www.oracle.com/us/corporate/accessibility/support/index.html#info> or visit <http://www.oracle.com/us/corporate/accessibility/support/index.html#trs> if you are hearing impaired.

Organization of the Guide

This document contains:

Chapter 2 Customizing Collections

This chapter describes the steps to be performed to configure Collections.

Conventions

The following text conventions are used in this document:

Convention	Meaning
Boldface	Boldface type indicates graphical user interface elements associated with an action, or terms defined in text or the glossary.
<i>Italic</i>	Italic type indicates book titles, emphasis, or placeholder variables for which you supply particular values.
Monospace	Monospace type indicates commands within a paragraph, URLs, code in examples, text that appears on the screen, or text that you enter.

1 About this Guide

This guide is applicable for the following products:

- Oracle Banking Platform
- Oracle Banking Enterprise Collections

References to Oracle Banking Platform or OBP in this guide apply to all the above mentioned products.

2 Customizing Collections

This chapter describes the steps to be performed to configure Collections.

2.1 Prerequisites

Following are the prerequisites:

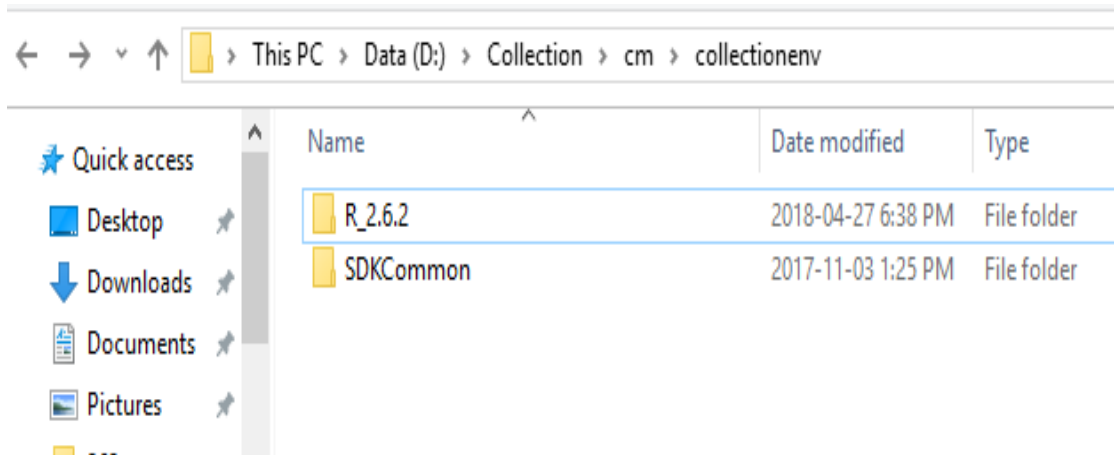
- Jdk1.8 64 bit is installed
- Weblogic Server 12.2.1.2.0 is installed

2.2 Customizing Collections

To customize Collections:

1. Download **CollectionSDK.rar** from the following location:
<http://edelivery.oracle.com/>
2. Make an installation directory. (Example used in the document is D:\Collection\cm)
3. Make collectionenv directory in installation directory.
4. Unzip the CollectionSDK.rar on your D: drive.
5. Copy the **SDKCommon** and **R_2.6.2** folders to <installationDirectory>/collectionenv.

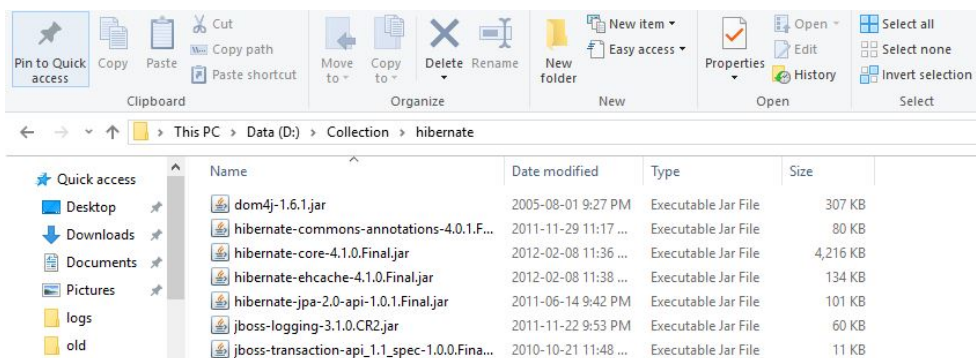
Figure 2–1 Copy SDKCommon and R_2.6.0031



6. Download hibernate-release-4.1.0.Final.zip from below link.
<http://sourceforge.net/projects/hibernate/files/hibernate4/>

7. Create a hibernate directory at D:/Collection and follow the below steps:
 - a. Extract downloaded hibernate-release-4.1.0.Final.zip package in D: drive.
 - b. Copy below jars from extracted hibernate-release-4.1.0/lib/required folder to created hibernate path.
 - i. hibernate-commons-annotations-4.0.1.Final.jar
 - ii. hibernate-core-4.1.0.Final.jar
 - iii. jboss-logging-3.1.0.CR2.jar
 - iv. hibernate-jpa-2.0-api-1.0.1.Final.jar
 - v. jboss-transaction-api_1.1_spec-1.0.0.Final.jar
 - vi. dom4j-1.6.1.jar
 - c. Copy below jar from extracted hibernate-release-4.1.0/lib/optional/ehcache folder to created hibernate path.
 - i. hibernate-ehcache-4.1.0.Final.jar

Figure 2–2 Hibernate folder



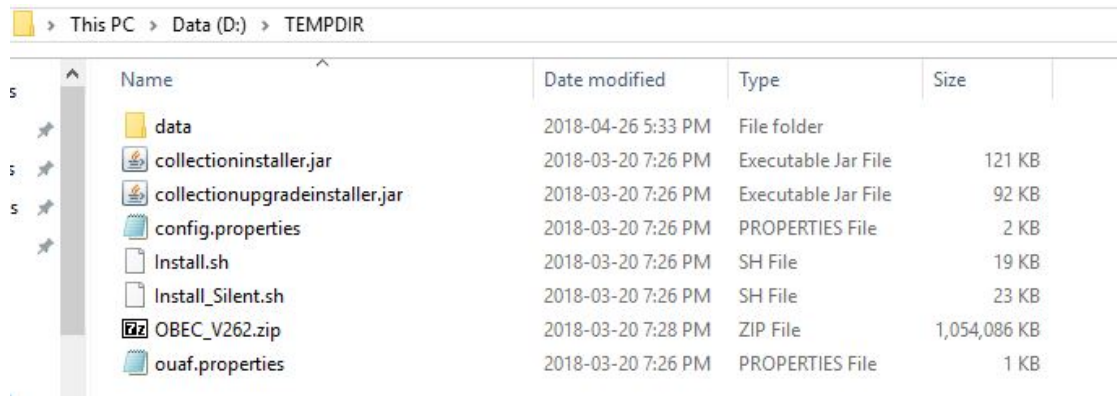
2.3 Using the Collection Installer

To use Collection Installer for customization setup:

1. Download the Collection Installer from the following location:
<http://edelivery.oracle.com/>
2. Copy the OBP Collections 2.6.1.0.0 installation package, Collection_V26[Build_Number].zip, which you have downloaded from the edelivery to a TEMP location.
3. Extract the zip.
4. Uncompress the Collection_V26[Build_Number].zip file using the following command:

```
cd <PATH>/TEMPDIR unzip Collection_V26[Build_Number].zip
```

 Where, <PATH> is the path where the TEMPDIR folder is located.
 The contents of the zip file are extracted in the TEMPDIR folder.

Figure 2–3 TEMPDIR Content


Name	Date modified	Type	Size
data	2018-04-26 5:33 PM	File folder	
collectioninstaller.jar	2018-03-20 7:26 PM	Executable Jar File	121 KB
collectionupgradeinstaller.jar	2018-03-20 7:26 PM	Executable Jar File	92 KB
config.properties	2018-03-20 7:26 PM	PROPERTIES File	2 KB
Install.sh	2018-03-20 7:26 PM	SH File	19 KB
Install_Silent.sh	2018-03-20 7:26 PM	SH File	23 KB
OBEC_V262.zip	2018-03-20 7:28 PM	ZIP File	1,054,086 KB
ouaf.properties	2018-03-20 7:26 PM	PROPERTIES File	1 KB

5. Change the `IS_DEV_ENV` property in `config.properties` to `True`.

Figure 2–4 Config.properties

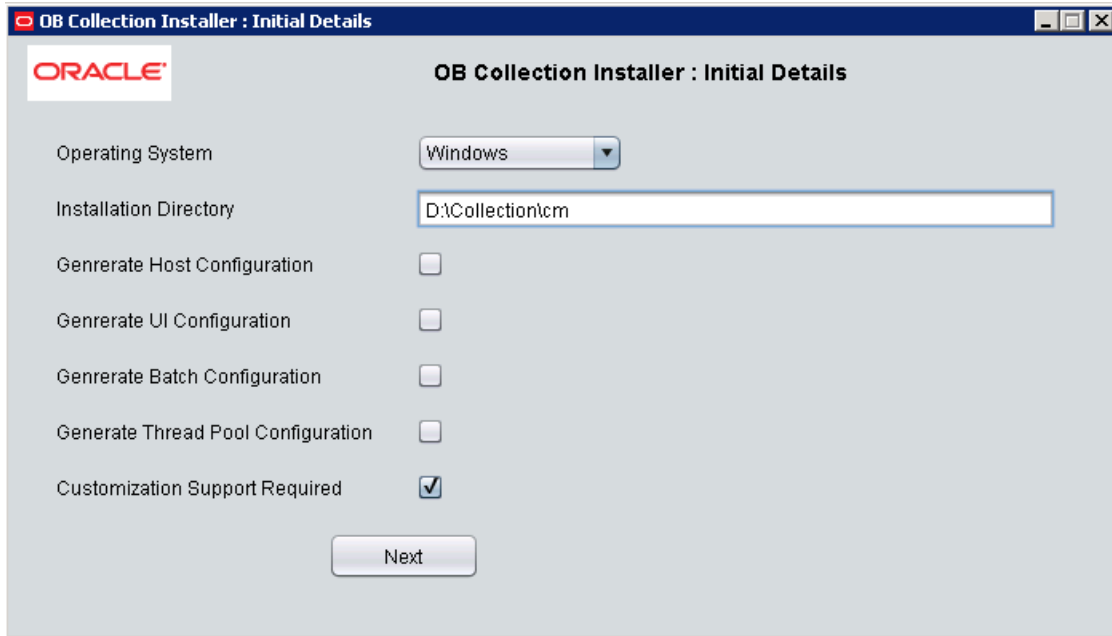

```

config.properties - Notepad
File Edit Format View Help
IS_DEV_ENV=true
OBP_HOST_LIB=ob.host.app.ob.app.host.coll/APP-INF/lib
OBP_THIRDPARTY_LIB=ob.host.app.ob.app.host.tp/APP-INF/lib
IS_UI_ENABLED=Y
#TNTTTΔI ΔFTΔTI ΔI

```

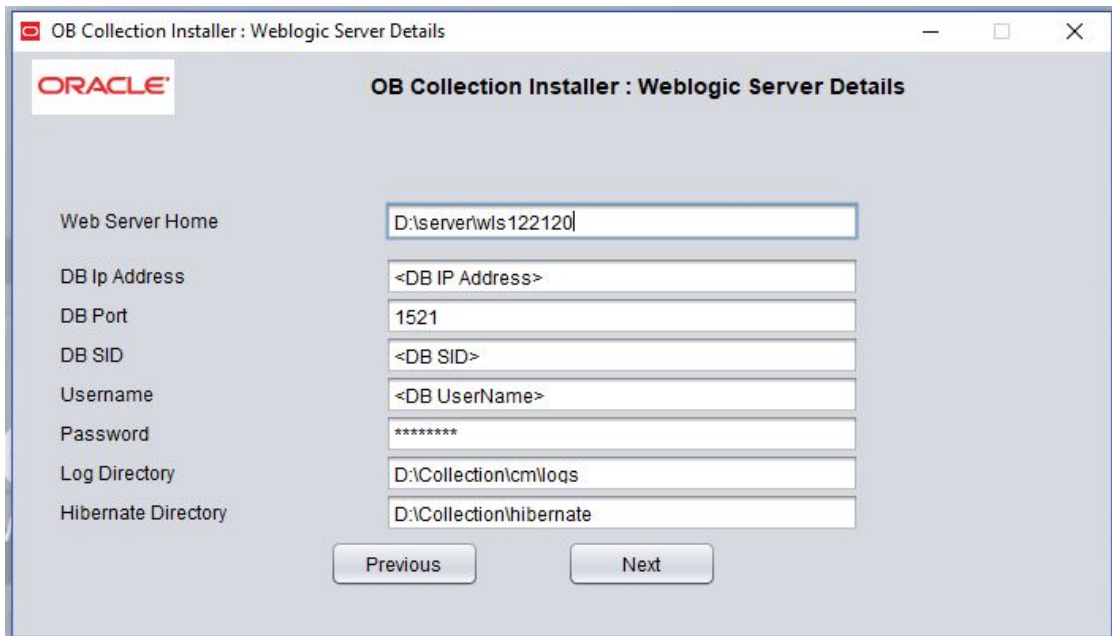
6. Run the executable jar (`java -jar collectioninstaller.jar`). The Collection Installer opens.
7. In the Initial Details dialog box, enter the **Installation Directory** as `D:\Collection\cm` as the location where collection is to be installed.

Figure 2–5 Collection Installer: Initial Details



8. Select the **Customization Support Required** checkbox.
9. Click **Next**.

Figure 2–6 Collection Installer:Weblogic Server Details



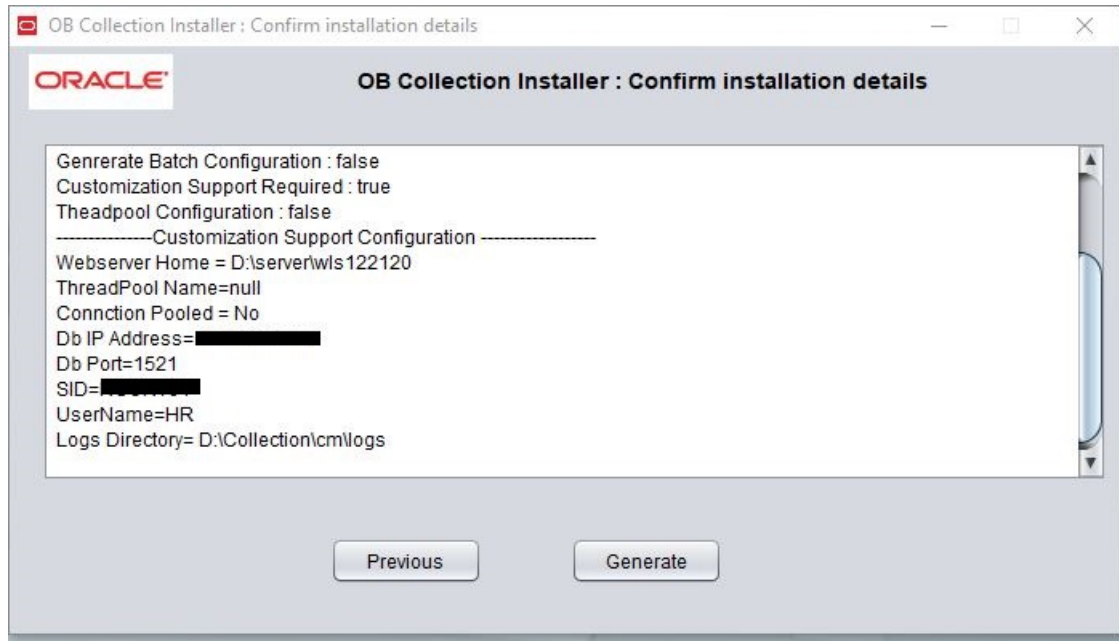
10. In Server Details dialog box, enter required details and click **Next**.

Web Server Home: Path to the Weblogic home directory (Example : D:\server\wls122120)

Username/Password: Credentials of the DB

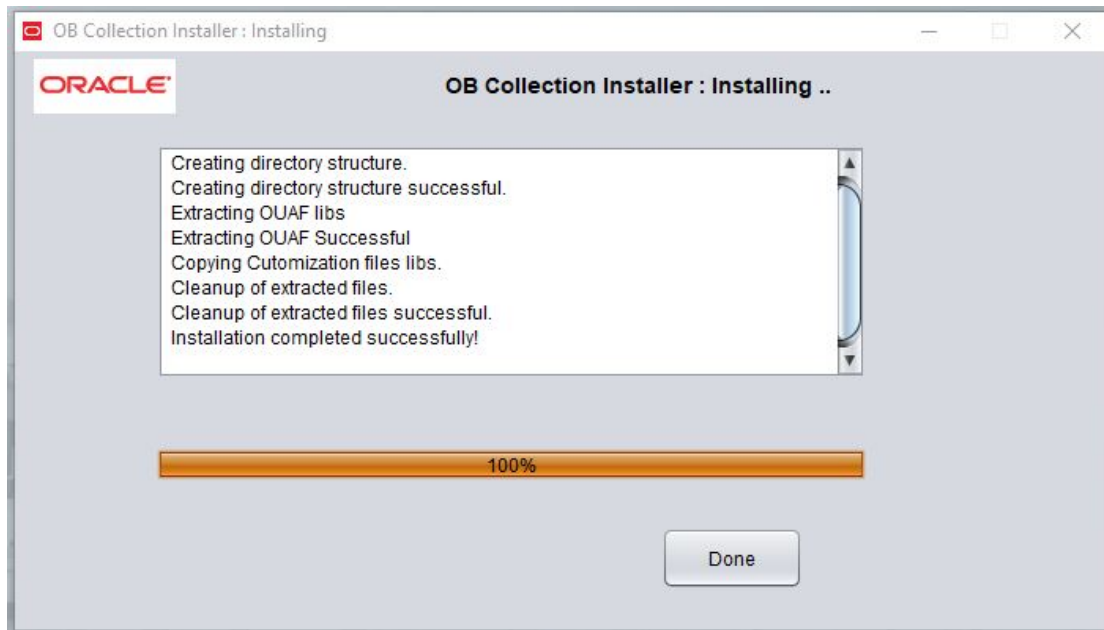
11. Click **Generate**.

Figure 2–7 Collection Installer: Confirm Installation Details



12. Click **Done**.

Figure 2–8 Collection Installer: Installation Complete



2.4 Downloading and Configuring Software and Jar Files

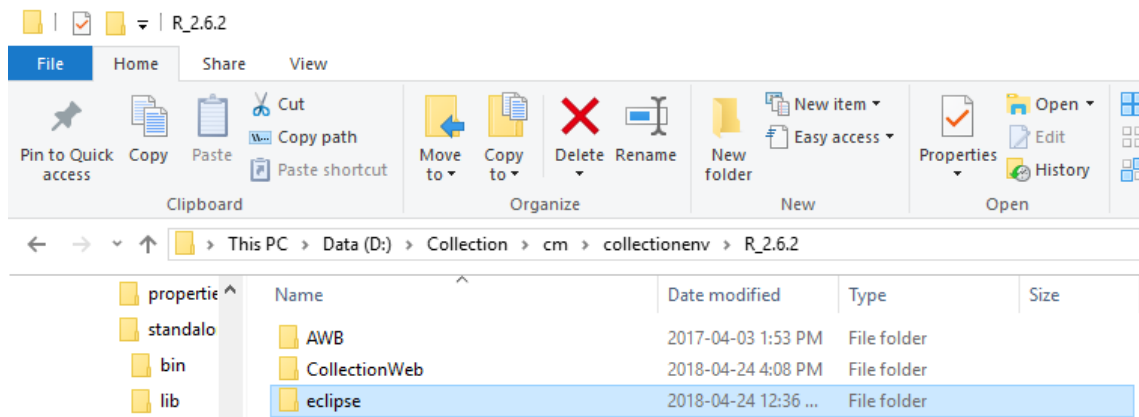
This section provides information on downloading and configuring the requisite software and jar files.

2.4.1 Downloading Eclipse

To download Eclipse:

1. Download Eclipse Neon from the following location:
http://www.eclipse.org/downloads/download.php?file=/technology/epp/downloads/release/neon/3/eclipse-java-neon-3-win32-x86_64.zip
2. Copy the downloaded Eclipse folder to the R_2.6.2 folder.
3. Copy Plugins from SDKCommon to Eclipse plugin folder.
From location : \SDKCommon\plugins
To location : \R_2.6.2\Eclipse\plugins

Figure 2–9 Copy Eclipse 4.4



2.4.2 Downloading Required Jars

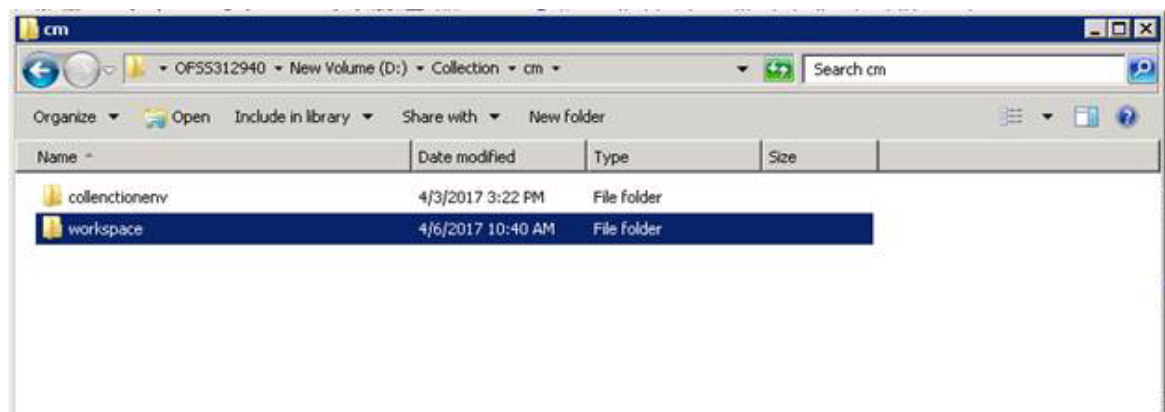
1. Download json-rpc jar from the following url:
<https://mvnrepository.com/artifact/com.metaparadigm/json-rpc/1.0>
2. Copy the jar file to the following location:
\\SDKCommon\tools

2.4.3 Configuring eclipse Project

To select and configure eclipse Project:

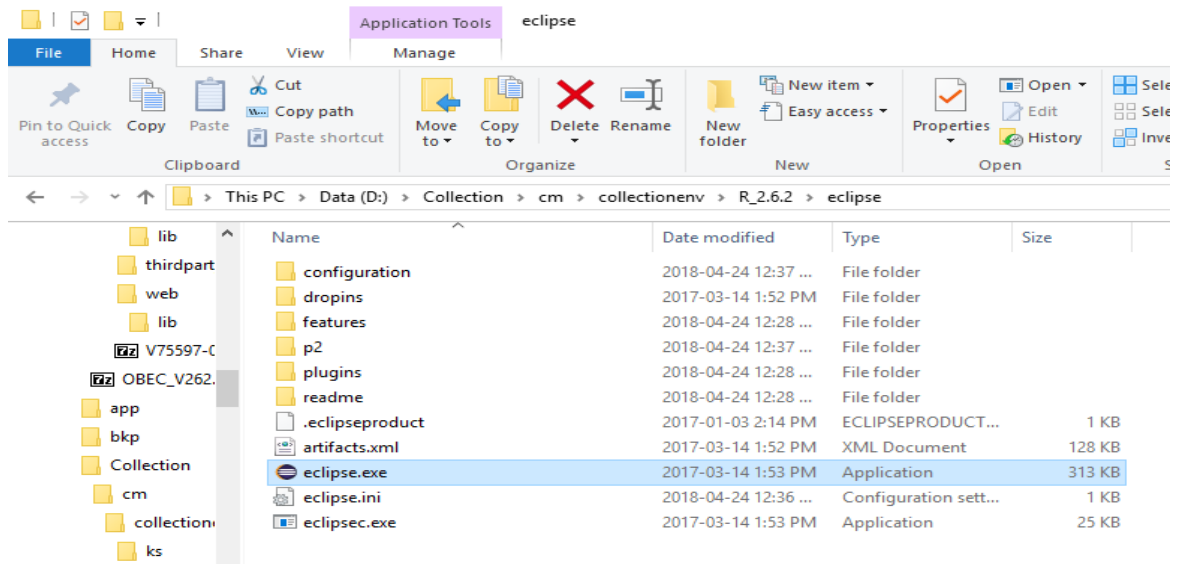
1. Create a new folder named **Workspace** where you have installed the Collection environment.

Figure 2–10 Create Workspace Folder



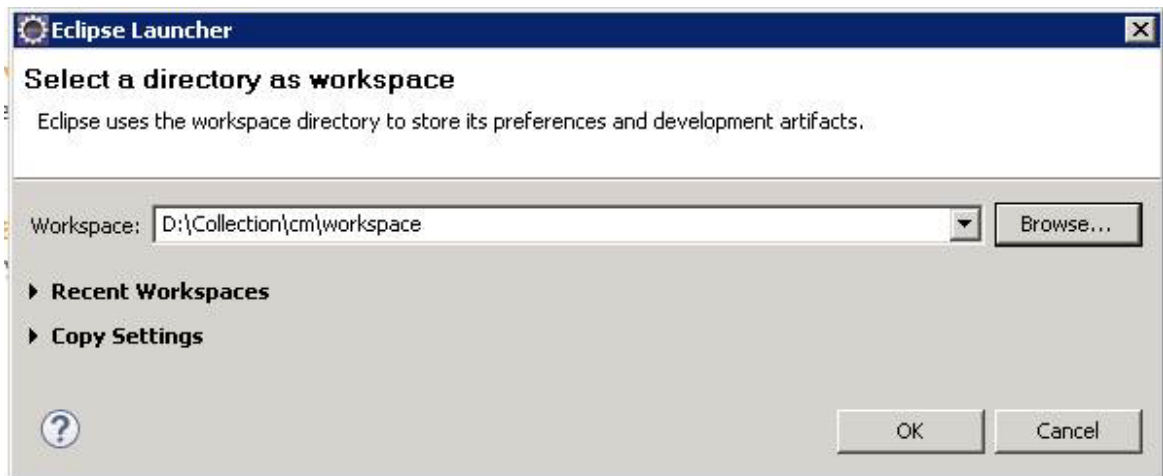
2. Navigate to the following location:
D:\Collection\cm\collenctionenv\R_2.6.2\eclipse
3. Double-click **Eclipse.exe**.

Figure 2–11 Double-click Eclipse.exe

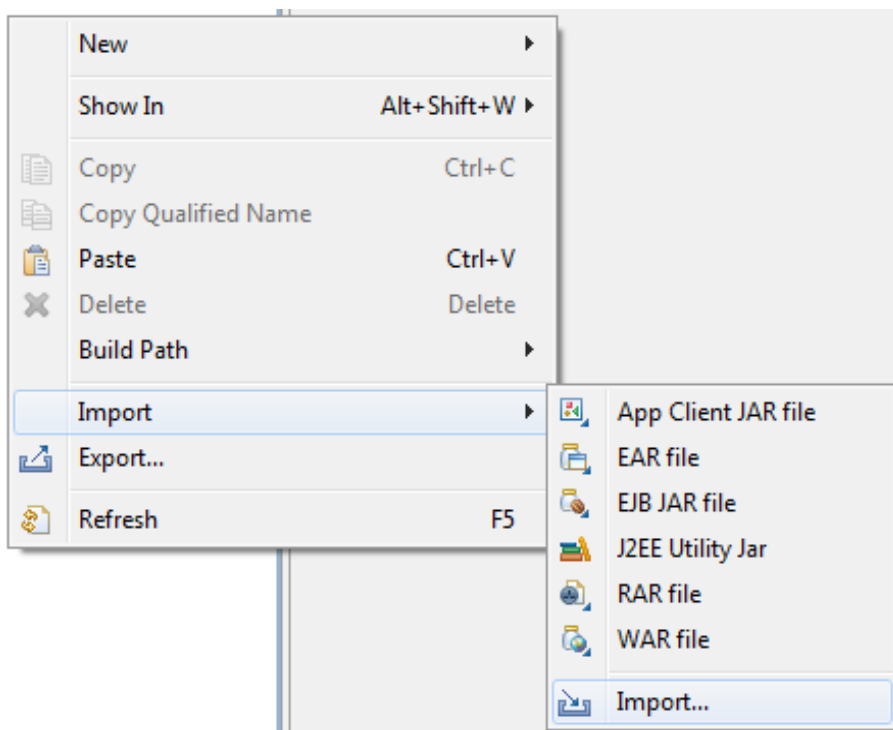


- In the Workspace Launcher dialog box, click **Browse**, and locate the path where you have created workspace folder.

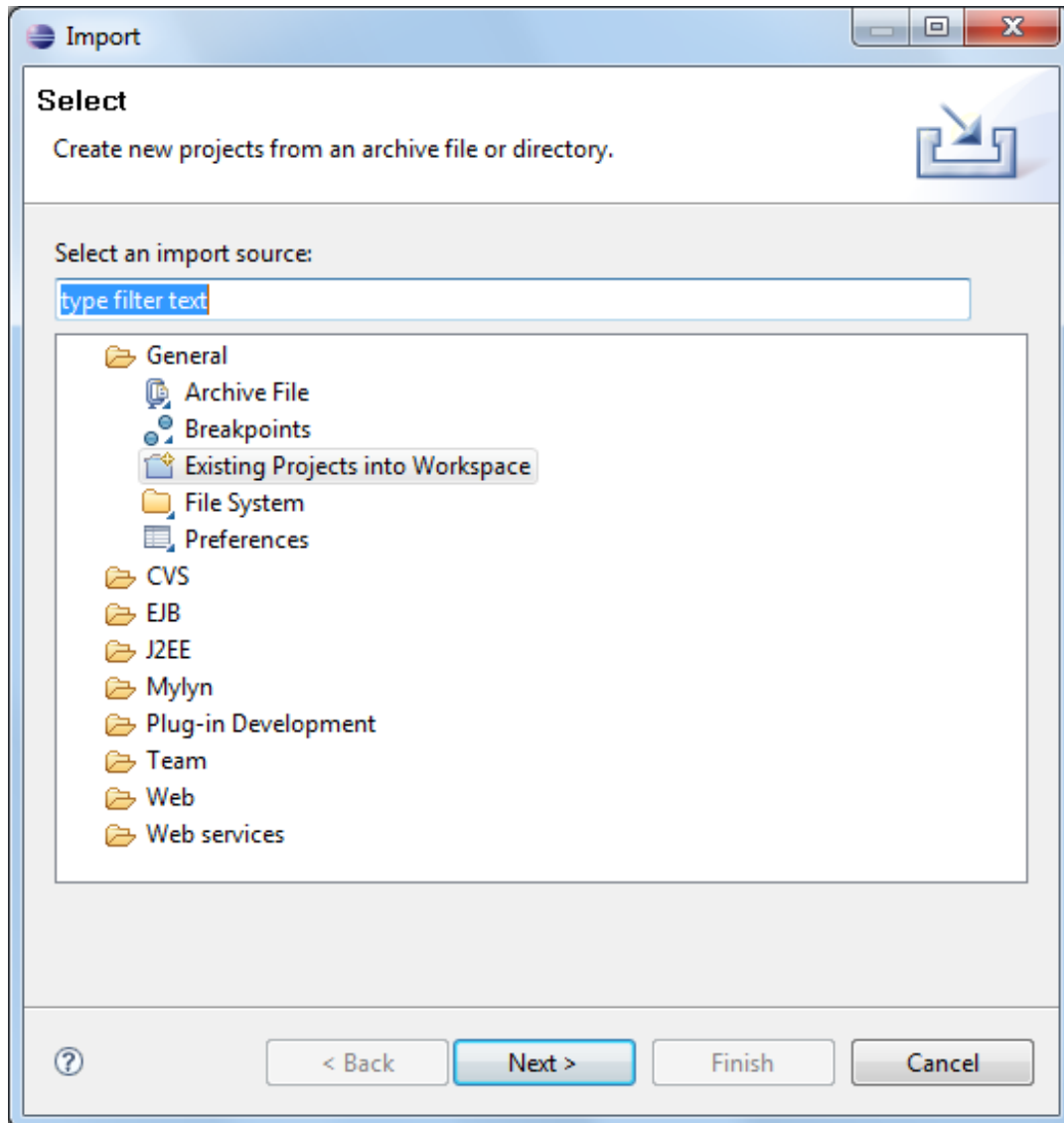
Figure 2–12 Workspace Launcher



- Click **OK**.
- Right-click the Project Explorer, and select **Import** → **Import**.

Figure 2–13 Project Explorer - Import

7. In the Import dialog box, select the **Existing Projects into Workspace** option.

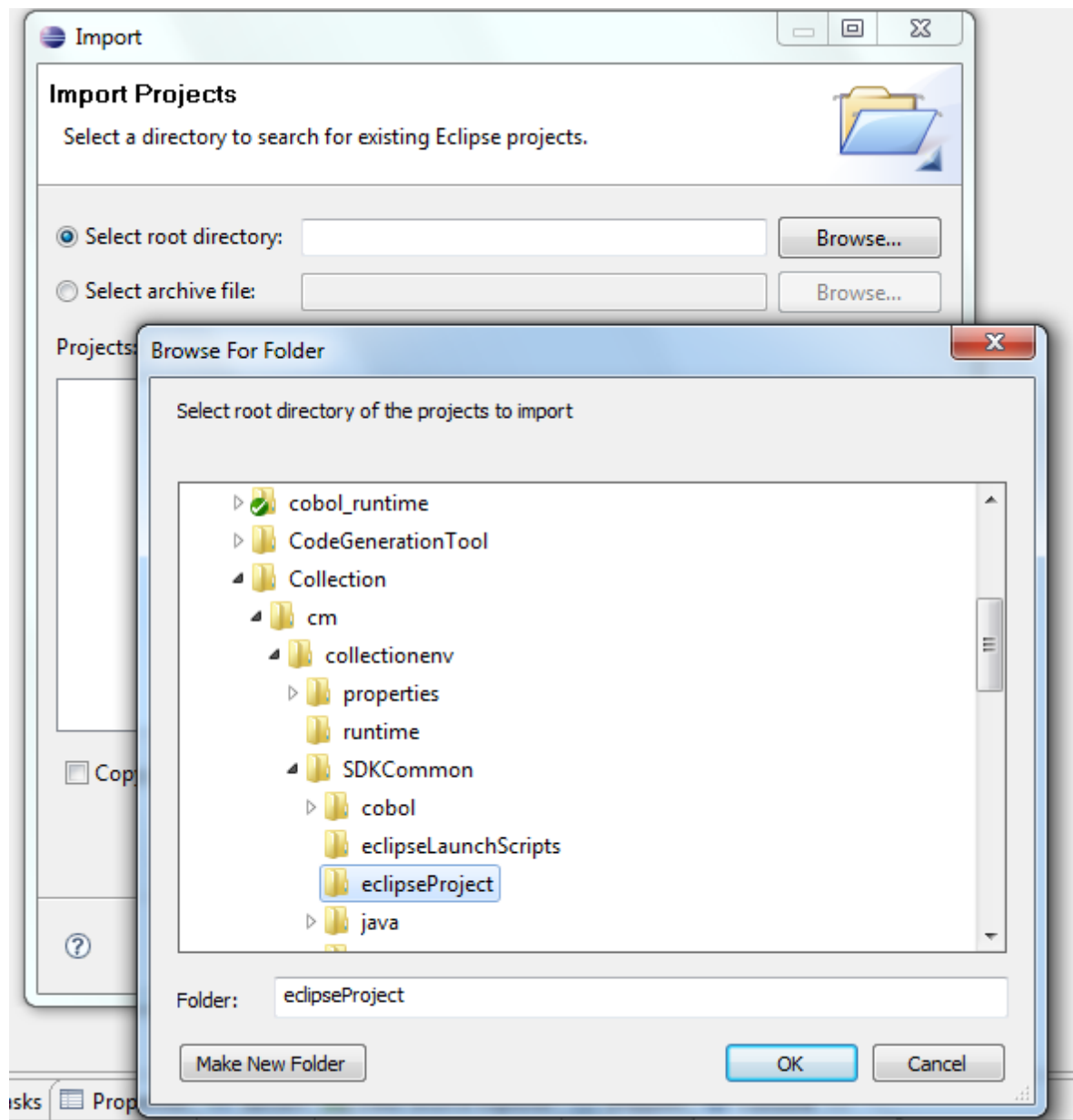
Figure 2–14 Select Existing Projects into Workspace

8. Click **Next**.
9. In the Import dialog box, select **Select root directory** option, and click **Browse**.
10. In the **Browse For Folder**, select **eclipseProject**.

You can locate the eclipseProject at:

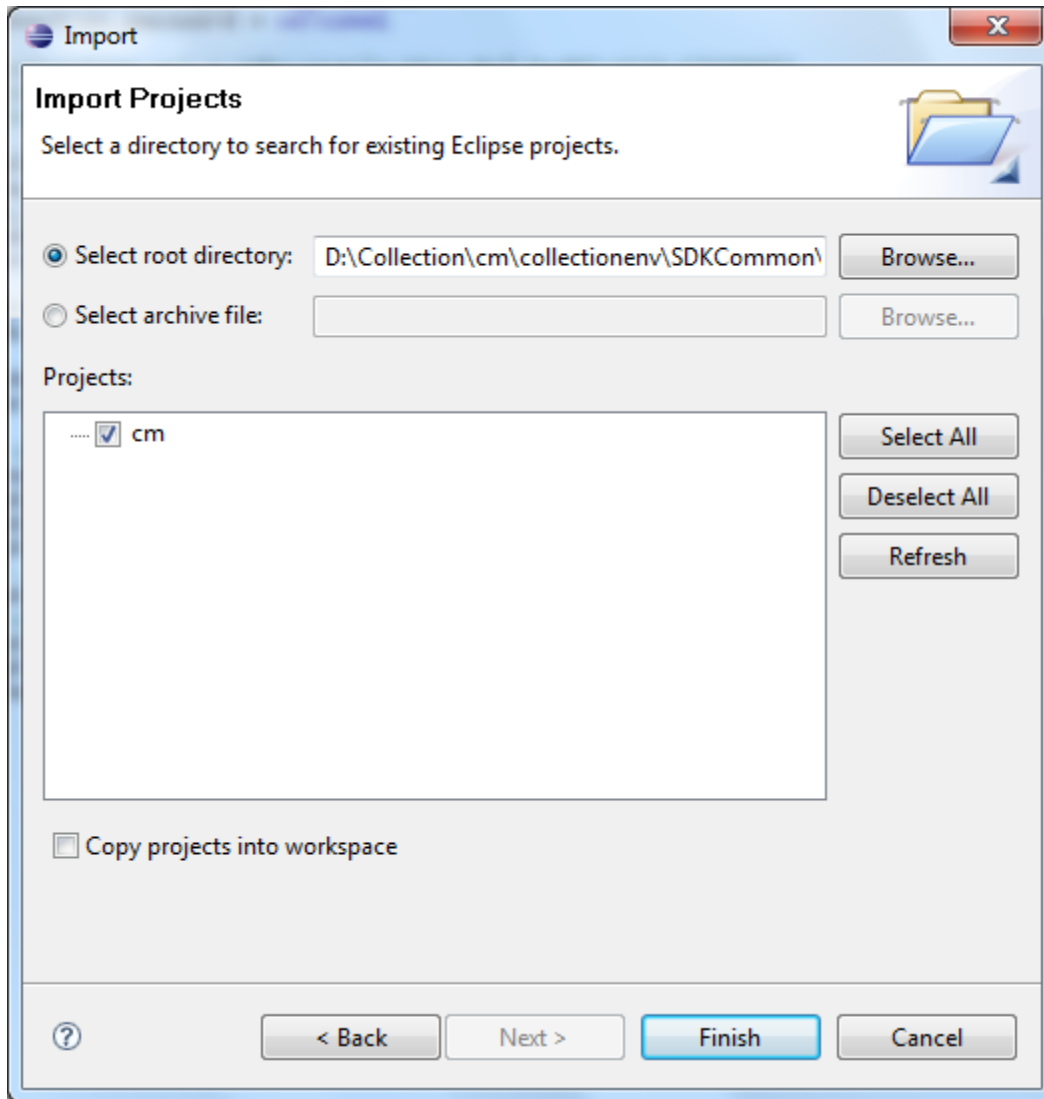
{Collection Environment Directory}\SDKCommon\eclipseProject

Figure 2–15 Browse and Locate eclipseProject



11. Click **OK**.
12. In the Import dialog box, click **Finish**.

Figure 2–16 Import Projects - Finish

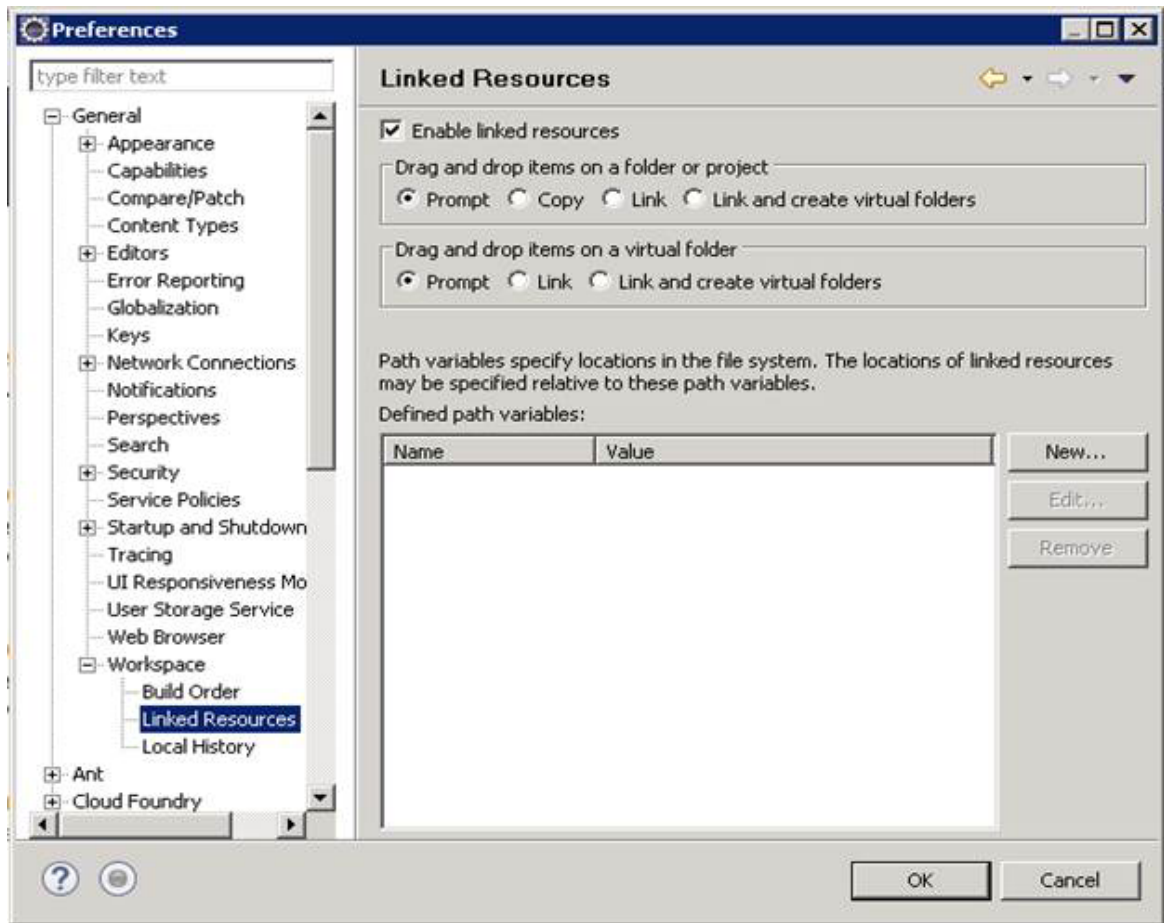


2.4.4 Creating Linked Resource

To create linked resource:

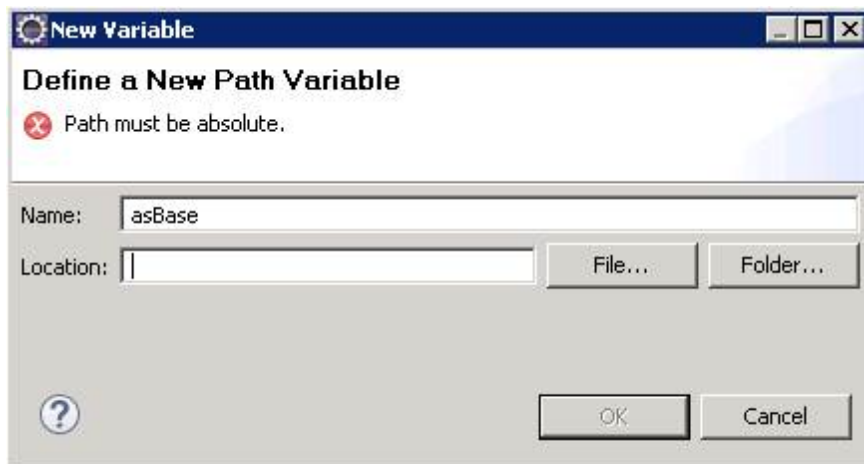
1. Navigate to **Window** -> **Preferences**.
2. In the **Preferences** dialog box, go to **General** -> **Workspace** -> **Linked Resource**.

Figure 2–17 Linked Resources

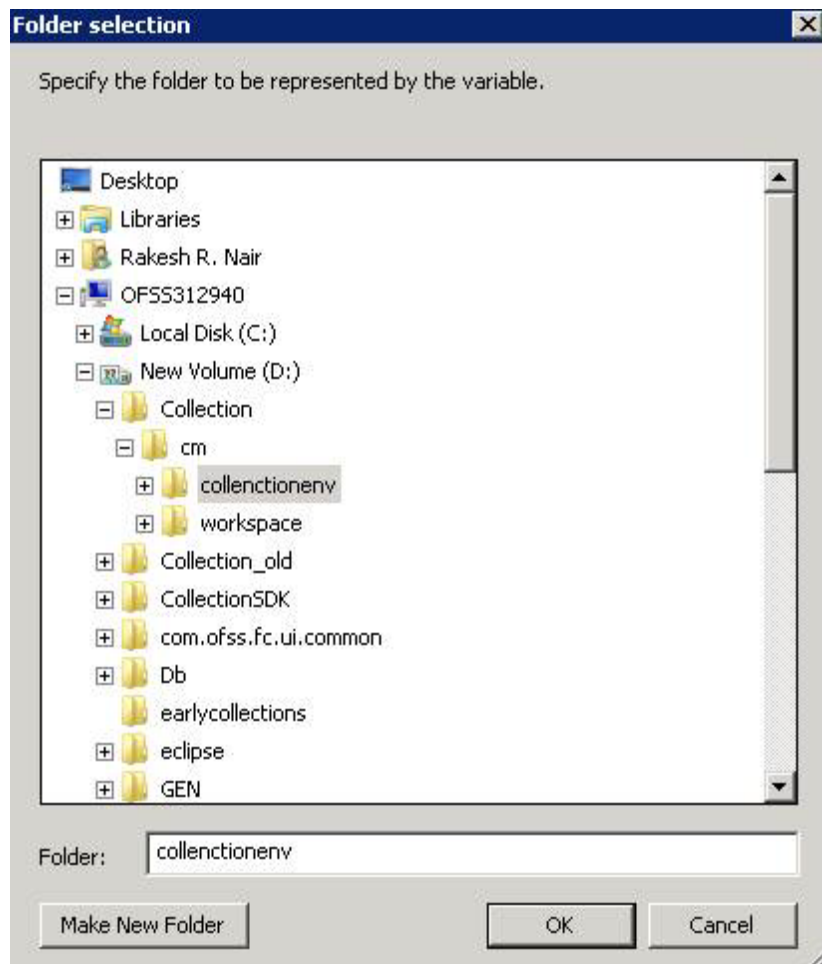


3. Click **New**.
4. In the **New Variable** dialog box, type `asBase` in the **Name** field.

Figure 2–18 New Variable asBase

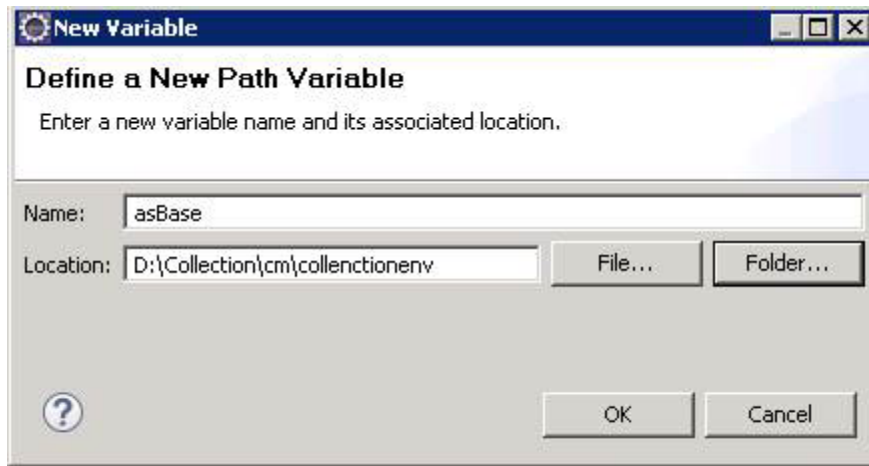


5. To specify location, click **Folder** and select the location where you have installed the Collection environment.

Figure 2–19 Select Folder

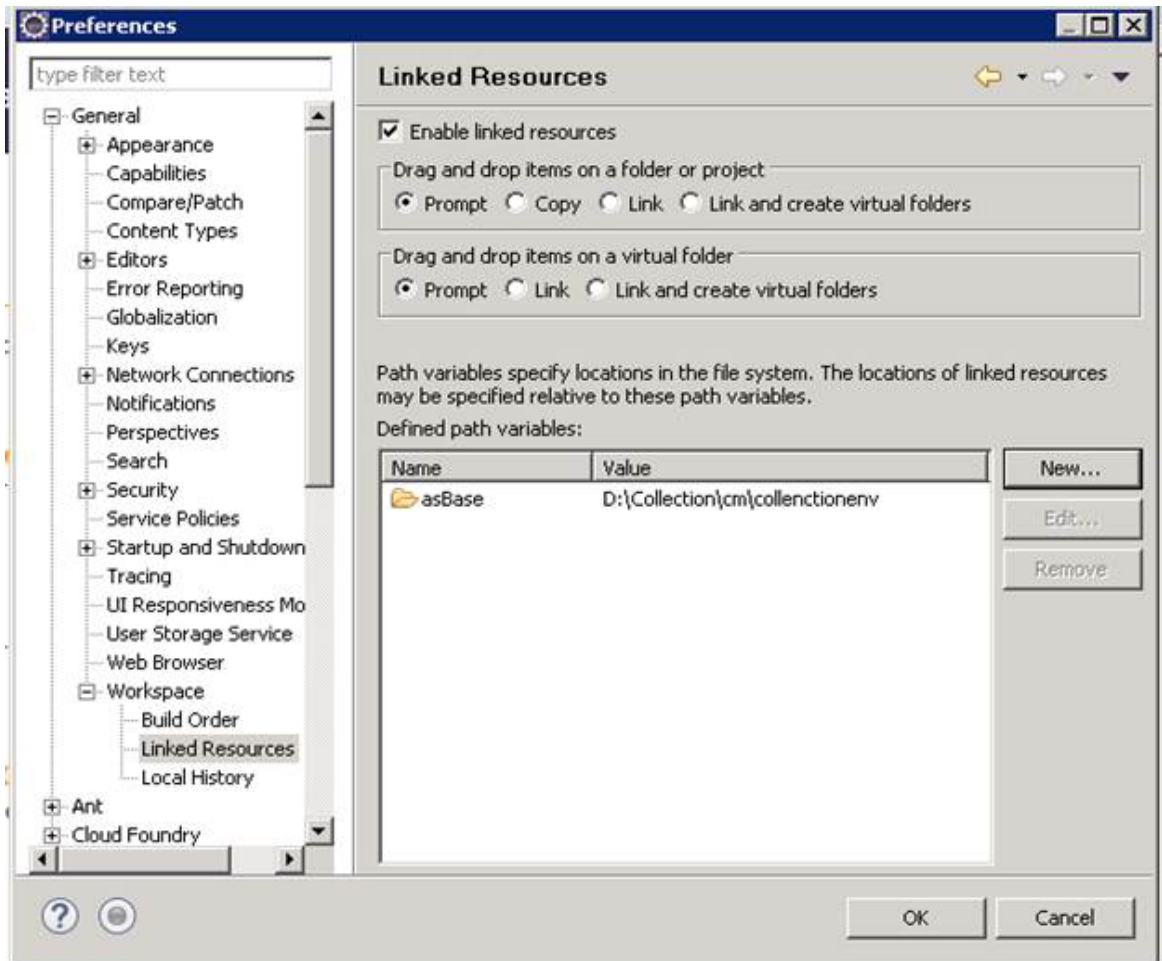
6. Click **OK**. The new variable name and location is set.

Figure 2–20 New Variable Name and Location



7. Click **OK**.

Figure 2–21 Linked Resources - Path Variables



8. Click **OK**.
9. Refresh project.

2.4.5 Creating weblogic domain

This section provides information on creating a new weblogic domain.

1. Open the weblogic installation directory.
2. Execute `wlstpy.cmd`.
3. New domain `<weblogic_root>/user_projects/domains/cm_domain` will be generated.
4. Remove jar `cglib.cglib-nodep.jar` from the location `<weblogic_root>/wlserver/modules`.
5. Edit `<weblogic_root>/user_projects/domains/cm_domain/setDomainEnv.cmd`
 - a. Search for `@REM IF USER_MEM_ARGS`
 - b. Add below line next to it
6. Set `USER_MEM_ARGS=-Xms128m -Xmx3072m %MEM_DEV_ARGS% %MEM_MAX_PERM_`

SIZE%

Figure 2–22 Edit setDomainEnv.cmd

```

5         call "%DOMAIN_HOME%\bin\setStartupEnv.cmd"
6     )
7 )
8
9 @REM Set user overrides, if available.
10
11 if exist %DOMAIN_HOME%\bin\setUserOverrides.cmd (
12     call "%DOMAIN_HOME%\bin\setUserOverrides.cmd"
13 )
14
15 @REM IF USER_MEM_ARGS the environment variable is set, use it to override ALL MEM_ARGS
16 set USER_MEM_ARGS=-Xms128m -Xmx3072m %MEM_DEV_ARGS% %MEM_MAX_PERM_SIZE%
17 if NOT "%USER_MEM_ARGS%"==" " (
18     set MEM_ARGS=%USER_MEM_ARGS%
19 )
20
21 set JAVA_PROPERTIES=-Dwls.home=%WLS_HOME% -Dweblogic.home=%WLS_HOME%

```

- a. Search for @REM PROFILING SUPPORT
 - b. Add below line as show in screenshot and save setDomainEnv.cmd file
7. Set JAVA_OPTIONS=%JAVA_OPTIONS% -
Djavax.xml.parsers.SAXParserFactory=com.sun.org.apache.xerces.internal.jaxp.SAXParserFactory
Impl

Figure 2–23 Edit setDomainEnv.cmd

```

@REM PROFILING SUPPORT

set JAVA_PROFILE=

set SERVER_CLASS=weblogic.Server

set JAVA_PROPERTIES=%JAVA_PROPERTIES% %WLP_JAVA_PROPERTIES%

set JAVA_OPTIONS=%JAVA_OPTIONS% %JAVA_PROPERTIES%

set JAVA_OPTIONS=%JAVA_OPTIONS% -Djavax.xml.parsers.SAXParserFactory=com.sun.org.apache.xerces.internal.jaxp.SAXParserFactoryImpl

if "%PRODUCTION_MODE%"=="true" (
    set JAVA_OPTIONS=-Dweblogic.ProductionModeEnabled=true %JAVA_OPTIONS%
)

```

8. Run `<weblogic_root>/user_projects/domains/cm_domain/startWebLogic.cmd` to bring the adminserver up.
9. Open `http://localhost:7001/console` with default username/password: `weblogic/weblogic1`.
10. Open `cm_domain ->JTA` and increase the timeout seconds to 300.
11. Click Save.

Figure 2–24 JTA Timeout

Settings for cm_domain

Configuration Monitoring Control Security Web Service Security ZDT Control Notes

General JTA Concurrency JPA EJBs Web Applications Logging Log Filters Batch

Save

Use this page to define the Java Transaction API (JTA) configuration of this WebLogic Server domain.

Timeout Seconds:	300
Abandon Timeout Seconds:	86400
Before Completion Iteration Limit:	10
Max Transactions:	10000
Max Unique Name Statistics:	1000
Checkpoint Interval Seconds:	300

Write recovery logs when determiners configured

2.4.6 Updating deploy.xml

This section provides information on the various file updates required.

1. Change deploy.xml.
 - a. Navigate to project **cm** → **tools** → **deploy.xml** and open it.
 - b. Change the **asBase** variable to **{Collection Environment Directory}**.
 - c. Change the **webBase** variable to **{Weblogic server root directory}**.

Figure 2–25 *deploy.xml*


```

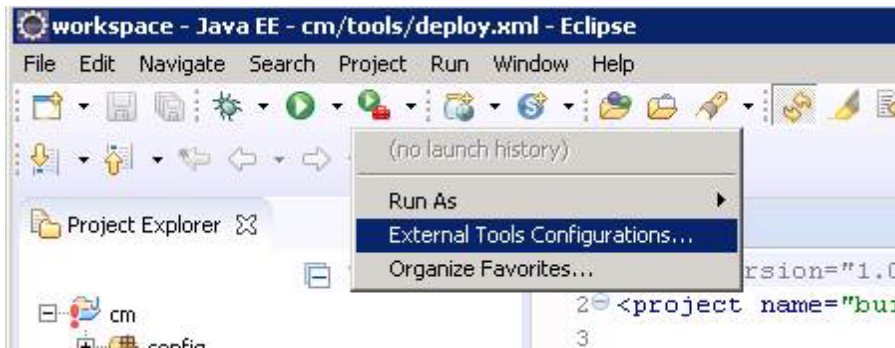
1 <?xml version="1.0"?>
2 <project name="build" default="all">
3   <property name="module.name" value="cm"/>
4   <property name="asBase" value="D:/Collection/cm/collectionenv"/>
5   <property name="webBase" value="D:/server/wls122120"/>
6   <property name="build.dir" value="${asBase}/SDKCommon/java/target/${module.name}"/>
7   <property name="deploy.dir" value="${asBase}/standalone/lib"/>
8   <property name="spl-service-ear.file" value="SPLService.ear" />
9   <property name="serviceBeanJar.file" value="spl-servicebean-4.3.0.1.0.jar" />
10  <property name="jarDir" value="${asBase}/standalone/lib"/>
11  <property name="spl-properties-jar.file" value="spl-properties.jar" />
12  <fileset id="libJars" dir="${asBase}/standalone/lib">
13    <include name="*.jar" />
14    <exclude name="${serviceBeanJar.file}"/>
15  </fileset>
16  <!--<property name="tomcat.dir" value="${asBase}/R_2.5/tomcat-6.0.14/bin"/>-->
17  <!-- <property name="standalone.dir" value="${asBase}/standalone/lib"/> -->
18
19  <!-- creating ${module.name} jar -->

```

2.4.7 Setting Variable in cmDeploy

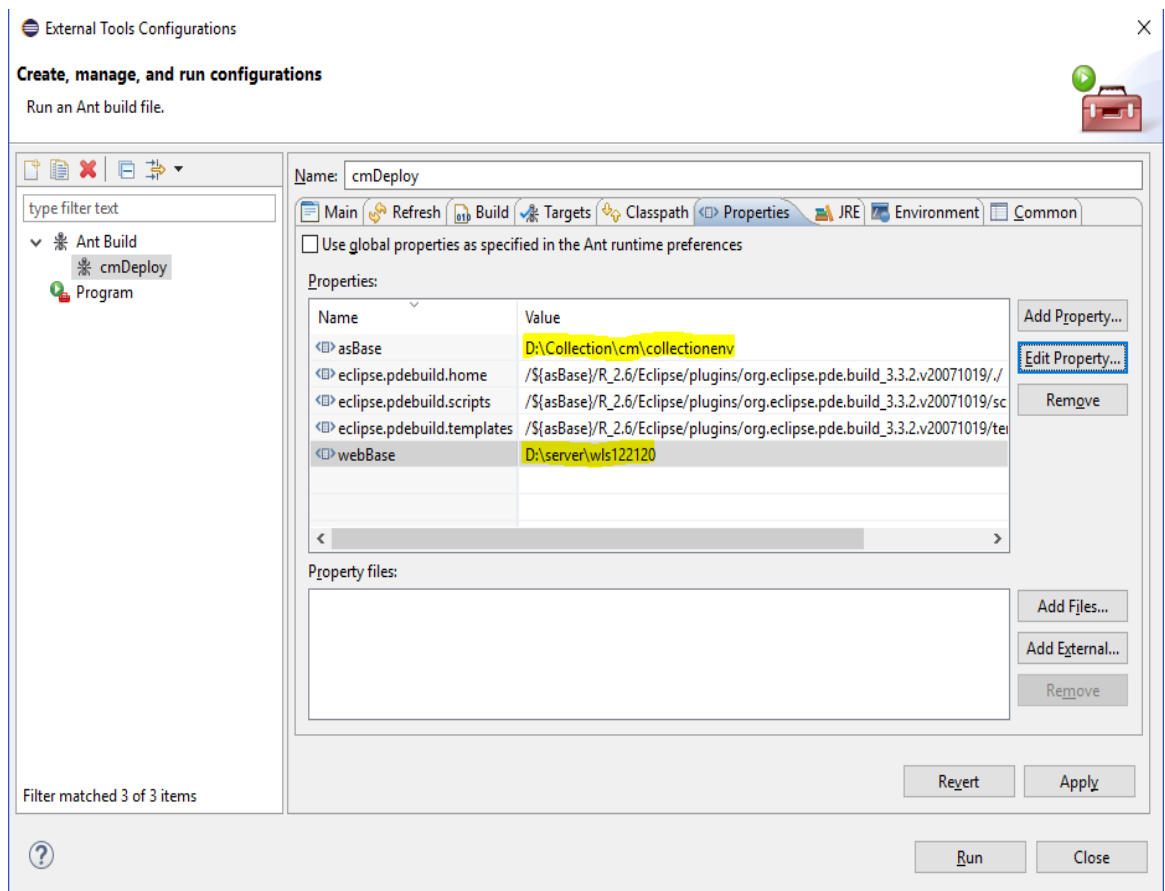
To set asBase variable in cmDeploy ant script:

1. Navigate to **Open External Tools Dialog** by clicking Run -> External Tools -> ExternalTools Configurations.

Figure 2–26 *Open External Tools Dialog*

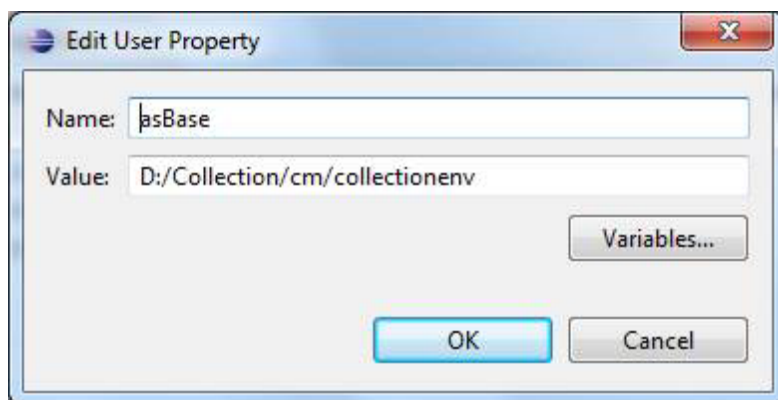
2. In the **External Tools** dialog box, select **cmDeploy** and edit asBase and webBase property.

Figure 2–27 External Tools - asBase

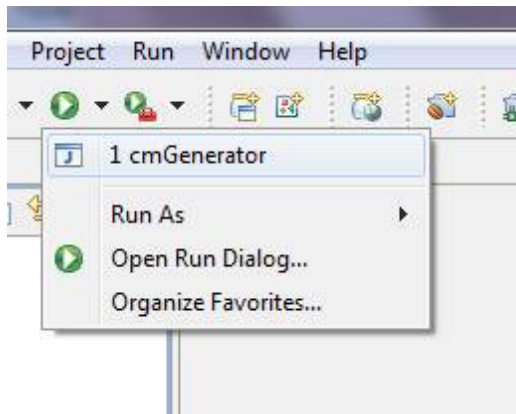


3. Click **Edit Property** and specify the path where you have installed collection environment.

Figure 2–28 asBase - Edit User Property



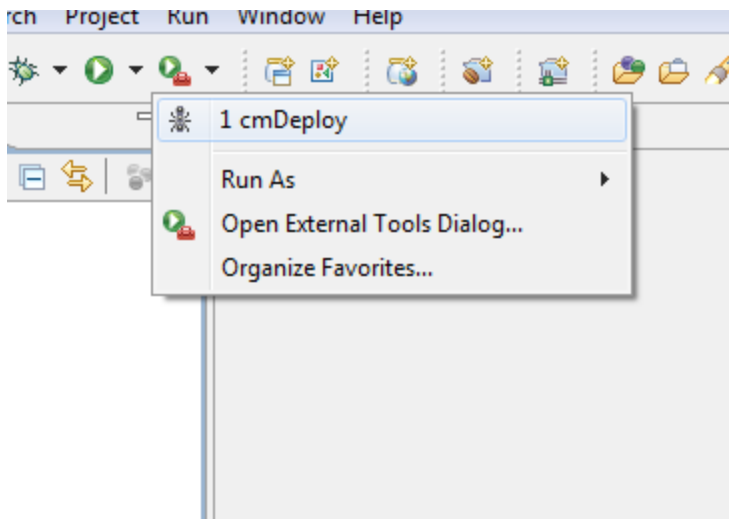
4. Click **Ok** and apply.
5. Run the artifact generator to ensure that the setup runs correctly.

Figure 2–29 Artifact Generator

2.4.8 Creating and Deploying cm.jar

To create and deploy cm.jar:

1. Create cm.jar and SPLService.ear using cmDeploy Ant script.

Figure 2–30 cmDeploy

After you run the ant script, cm.jar is created at following location:

{Your collection environment}\standalone\lib\cm.jar

2.4.9 Deploying SPLService, CollectionWeb and ohelp

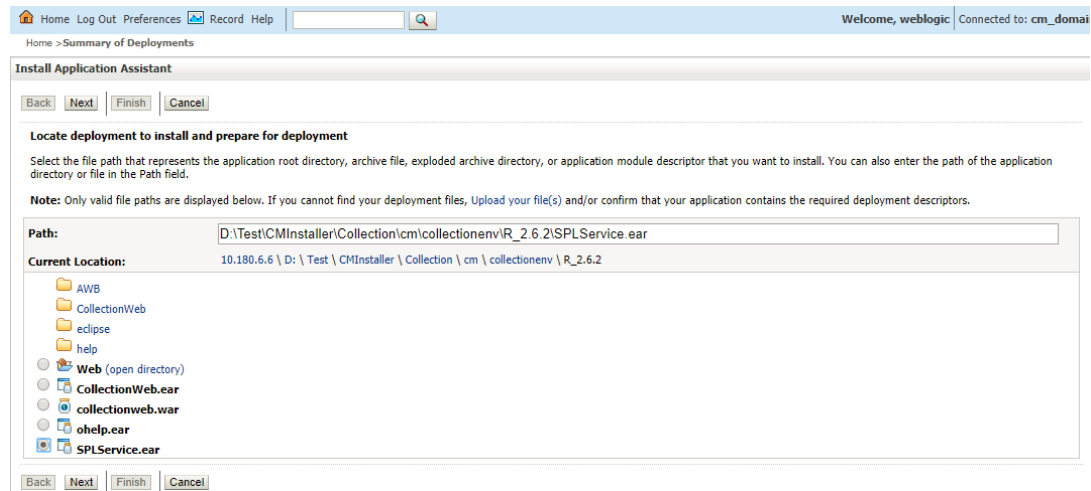
Deploy the CollectionWeb application to the newly created domain.

1. Stop weblogic server using below command :
 - a. cd <**Installation Directory**>/user_projects/domains/cm_domain/bin
 - b. stopWeblogic.cmd
2. Open <http://localhost:7001/console> with default username/password: weblogic/weblogic1

Step 1 Deploy SPLService.ear

1. Navigate to **Deployments -> Install**
2. Specify SPLService.ear path :
<Installation Directory>/collectionenv/R_2.6.0.2

Figure 2–31 Deploy SPLService.ear

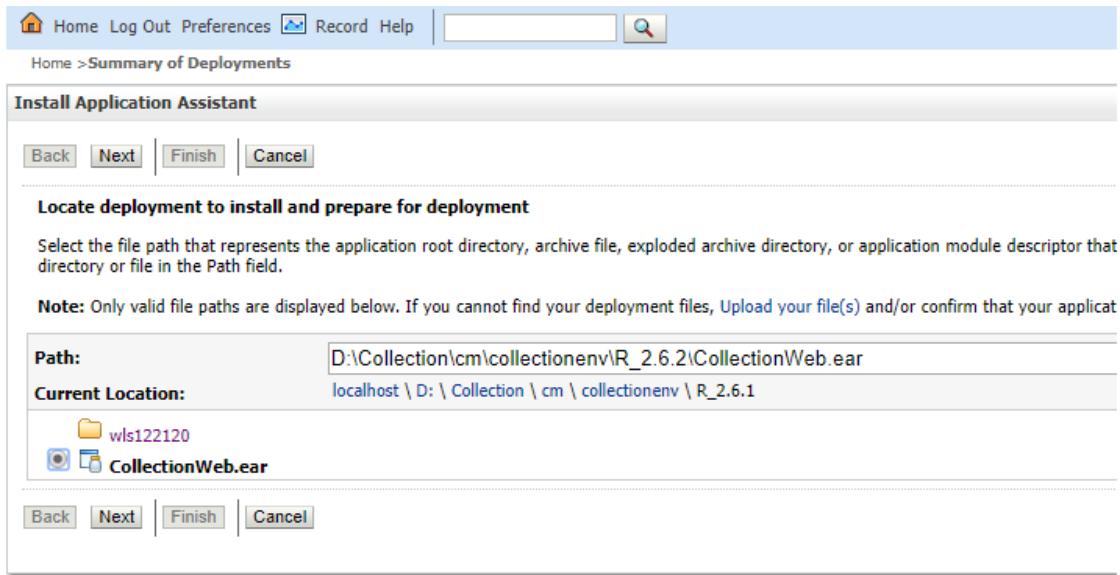


3. Select **SPLService.ear** ->Install as Application
4. Click **Next** -> **Finish**
5. **Default Deployment Order: 100**
6. Click **Save**

Step 2 Deploy CollectionWeb.ear

1. Navigate to **Deployments -> Install**
2. Specify CollectionWeb.ear path :
<Installation Directory>/collectionenv/R_2.6.2/

Figure 2–32 Deploy CollectionWeb

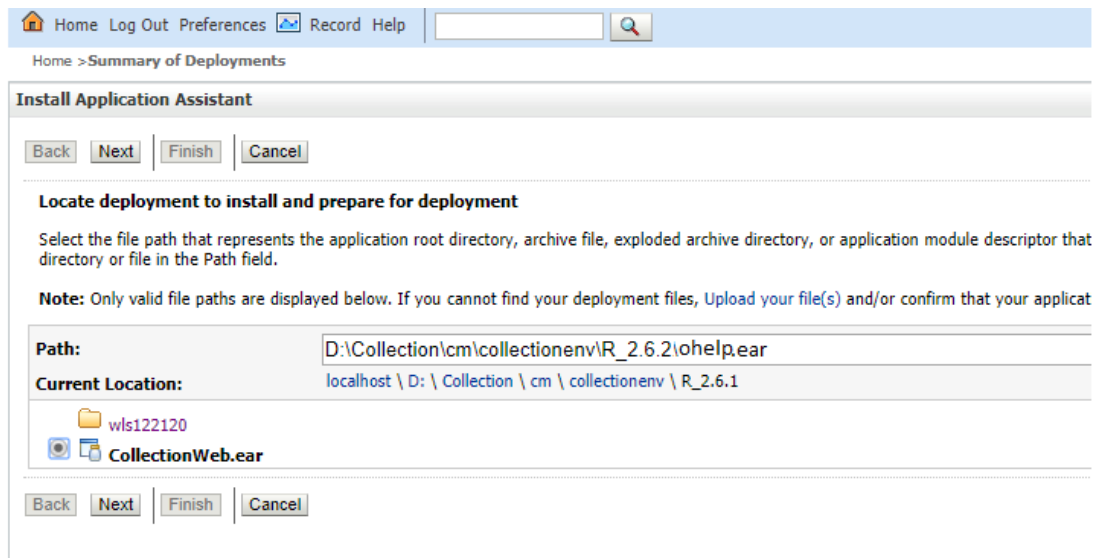


3. Select **CollectionWeb.ear**
4. Click **Next -> Finish**
5. **Set Deployment Order: 200**
6. Click **Save**

Step 3 Deploying ohelp.ear

1. Navigate to **Deployments -> Install**
2. Specify SPLService.ear path :
<Insatllation Directory>/collectionenv/R_2.6.2/

Figure 2–33 Deploy ohelp.ear



3. Select **ohelp.ear**
4. Click **Next -> Finish**
5. **Set Deployment Order: 300**
6. Click **Save**

Step 4 Checking State of above deployments

1. Navigate to **Deployment -> Install**
2. You can see State of both deployment will be Active.

Step 5 Configure User:

1. Open `http://localhost:7001/console`
2. Navigate to **Security Realms -> myrealm**
3. Open **User and Groups panel -> Groups -> new**
4. Create new group **cisuser** as shown below:

Figure 2–34 Creating new Group

Home Log Out Preferences Record Help

Home > myrealm > Summary of Security Realms > myrealm > Users and Groups > myrealm

Create a New Group

OK Cancel

Group Properties

The following properties will be used to identify your new Group.

* Indicates required fields

What would you like to name your new Group?

* **Name:** cisusers

How would you like to describe the new Group?

Description: cisusers desc

Please choose a provider for the group.

Provider: DefaultAuthenticator ▼

OK Cancel

5. Click **OK**
6. Navigate to **Users panel -> new**
7. Create new user **sysuser** as shown below:
8. Associate password for user (For eg. welcome1).

Figure 2–35 Creating new User

Create a New User

OK | Cancel

User Properties

The following properties will be used to identify your new User.
* Indicates required fields

What would you like to name your new User?

* **Name:**

How would you like to describe the new User?

Description:

Please choose a provider for the user.

Provider:

The password is associated with the login name for the new User.

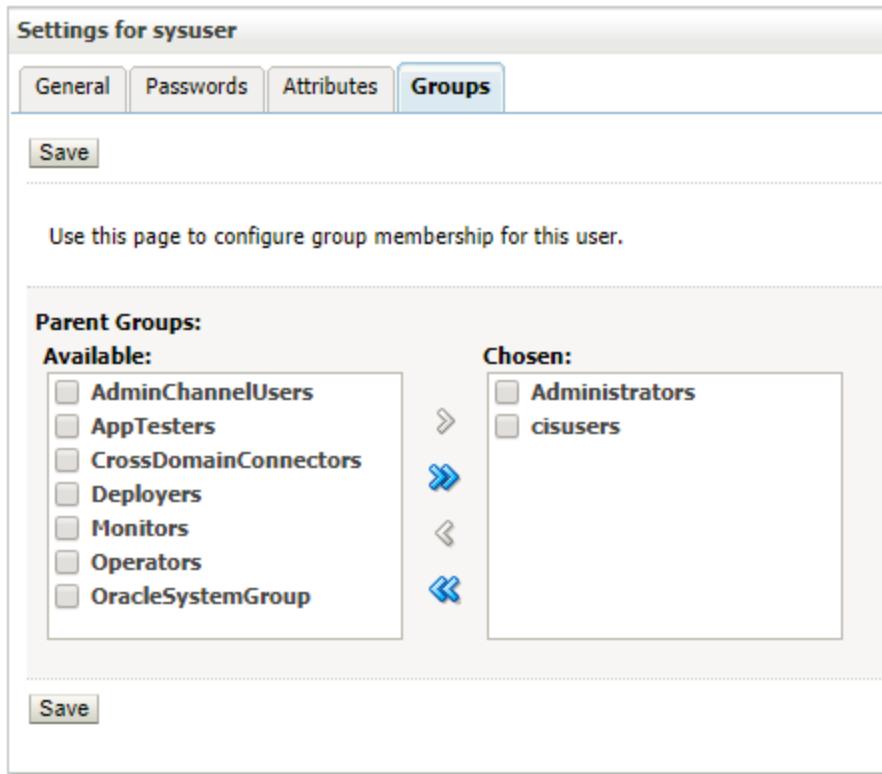
* **Password:**

* **Confirm Password:**

OK | Cancel

9. Click **OK**
10. Click on **sysuser** -> **Groups**
11. Select **Administrator** and **cisuser** and move to right as shown below:

Figure 2–36 Setting for new User



12. Click **Save**

Step 6 Open Admin Screen:

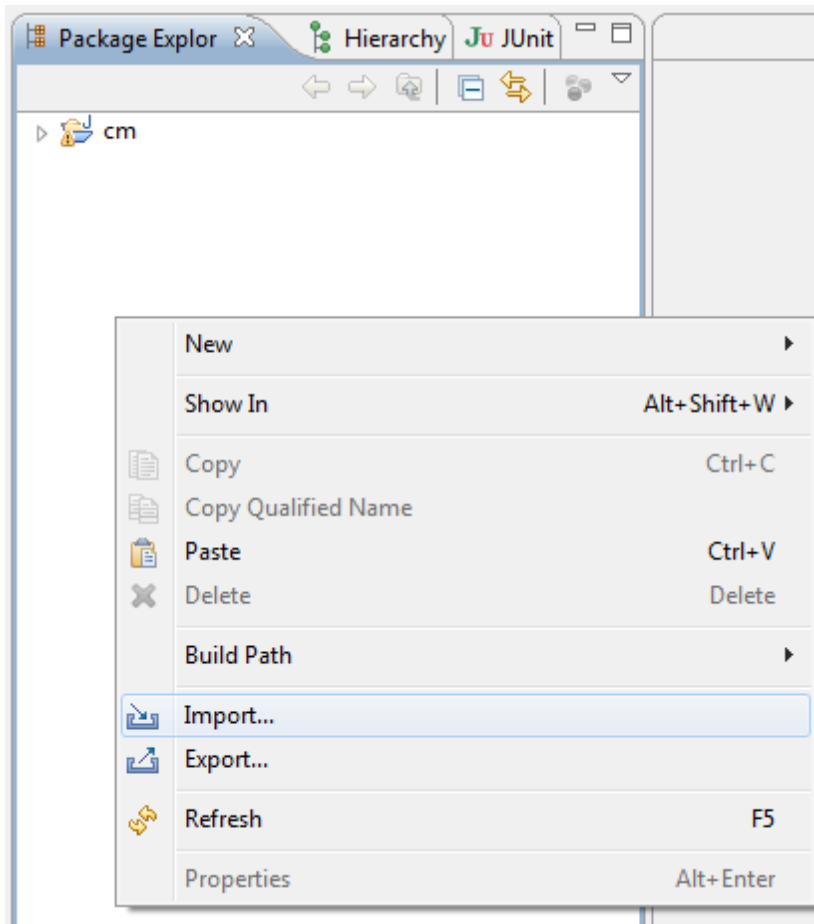
1. <http://localhost:7001/CollectionAdmin>.
2. Login using **sysuser** and **password** associated to user.

2.4.10 Importing Test Project into Customization Setup

To import Test Project into customization setup:

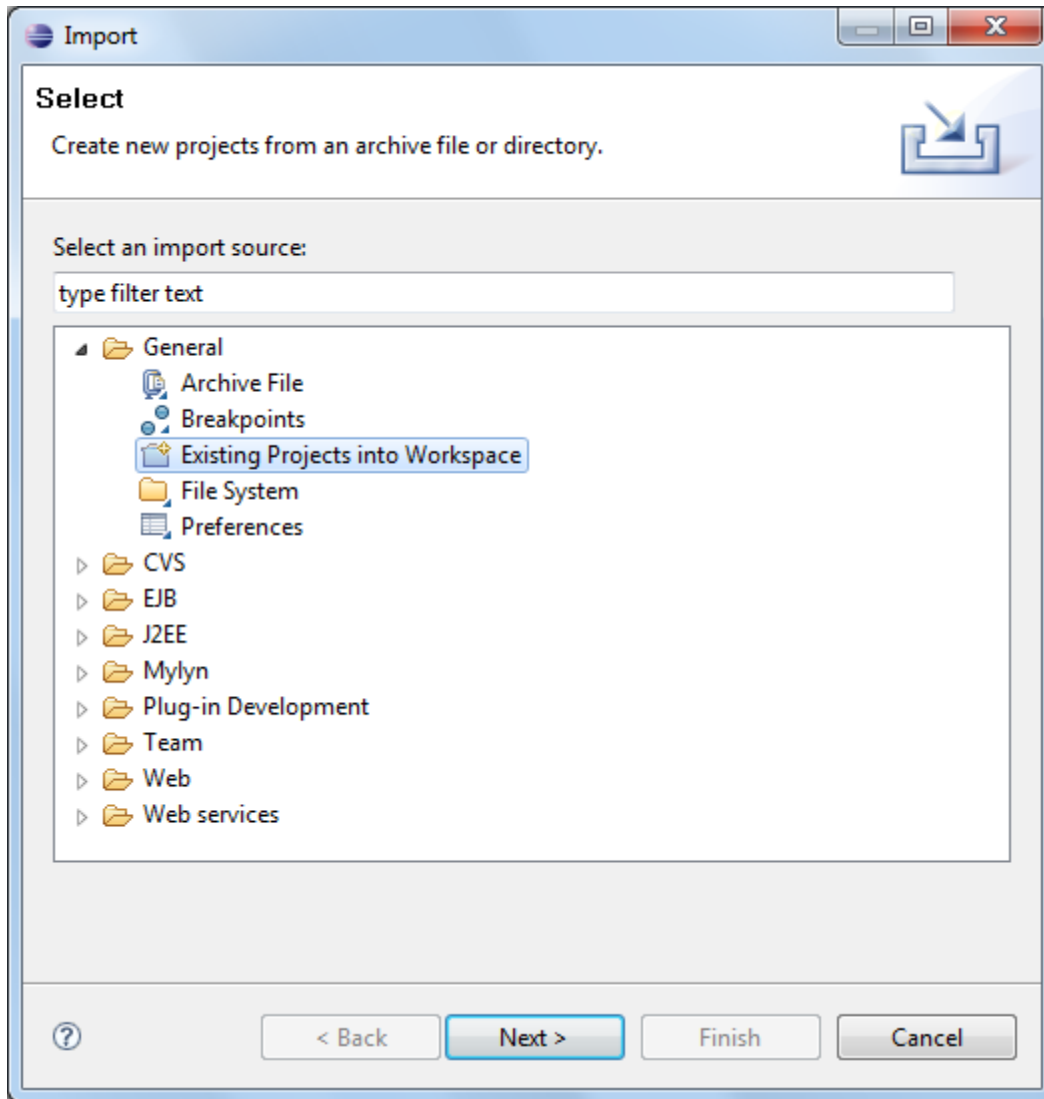
1. Right-click **Project Explorer**, and select **Import**.

Figure 2–37 Import



2. In the **Import** dialog box, select **Existing Projects into Workspace**.

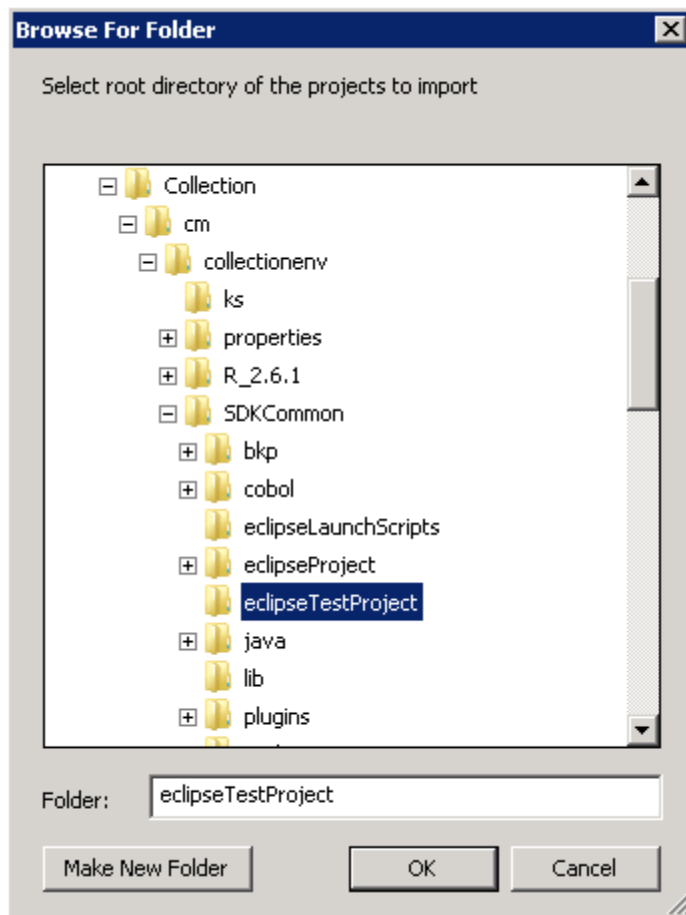
Figure 2–38 Select Existing Projects Into Workspace



3. Click **Next**.
4. In the **Browse For Folder**, select **eclipseTestProject**.

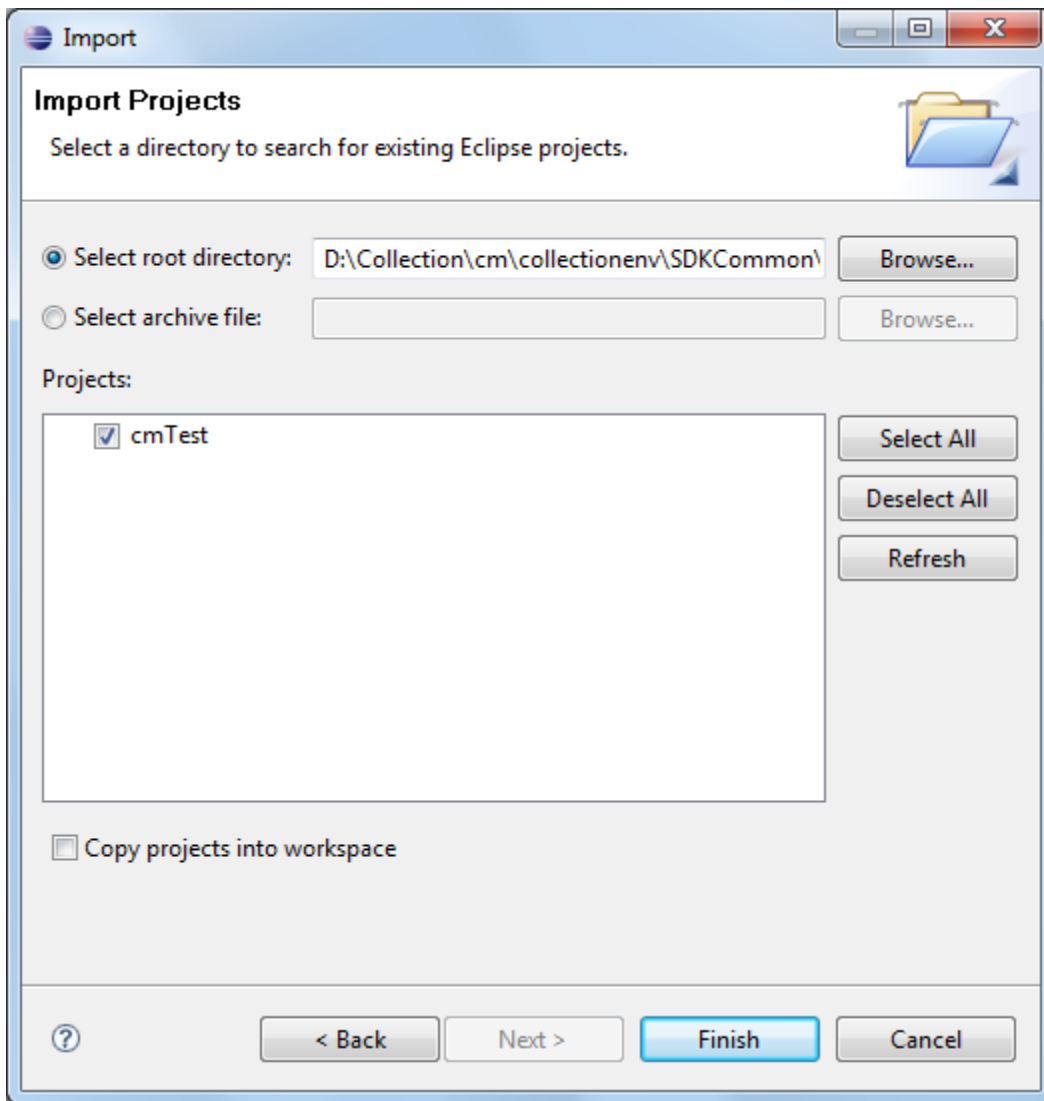
You can locate the eclipseTestproject at:

{Collection Environment Directory}\SDKCommon\eclipseTestProject

Figure 2–39 Select eclipseTestProject

5. In the **Import Projects** dialog box, click **Finish**.

Figure 2–40 Import Projects



2.4.11 Troubleshooting JUnit

During execution of JUnit, following possible error scenarios are encountered:

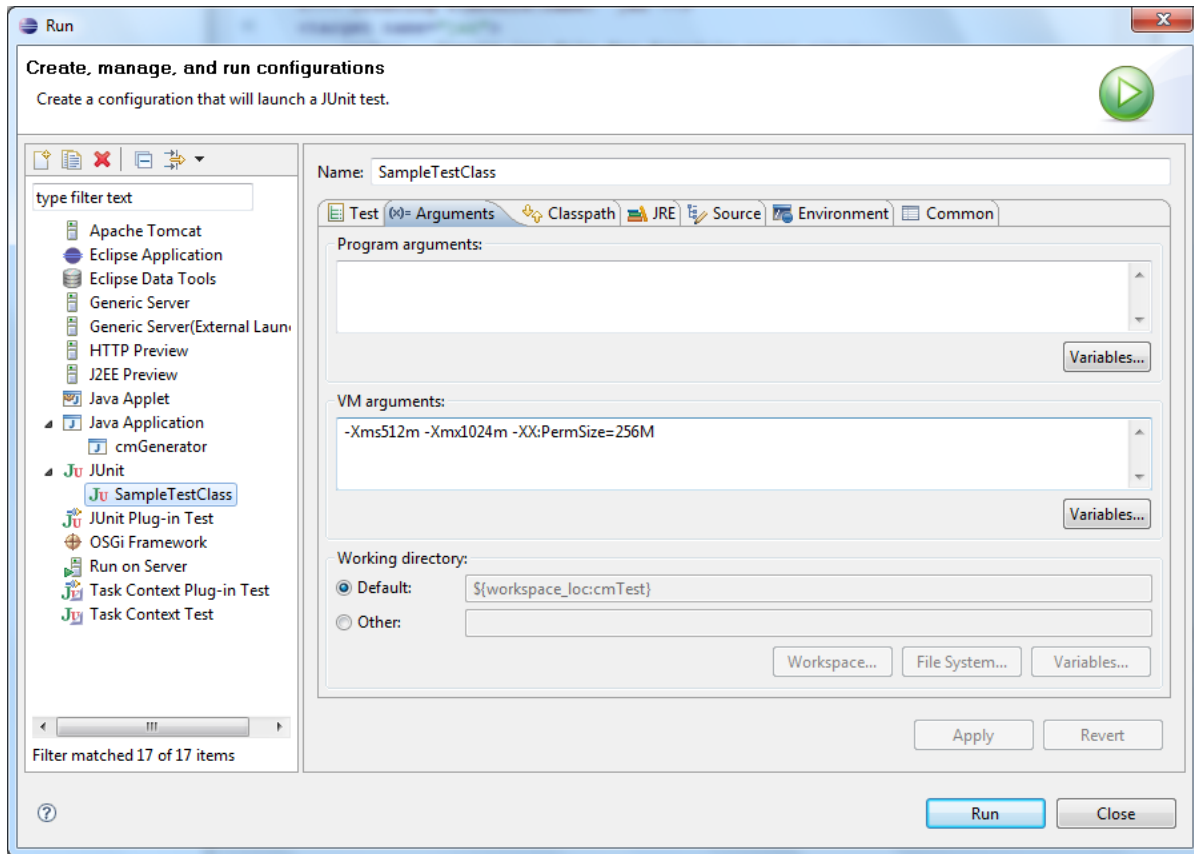
- Out of memory issue

To avoid these scenarios, the following settings need to be performed:

Out of Memory Issue

To address the Out of memory issue, set the VM arguments to **-Xms512m -Xmx1024m -XX:PermSize=256M**.

Figure 2–41 VM Arguments



Note

For running JUnit, ensure that you are using 64 bit JDK.
